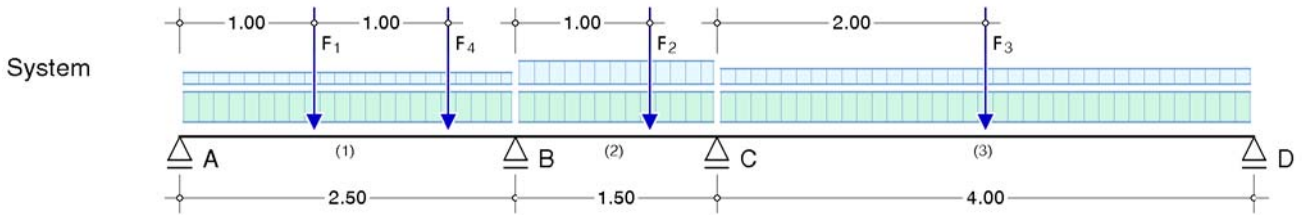


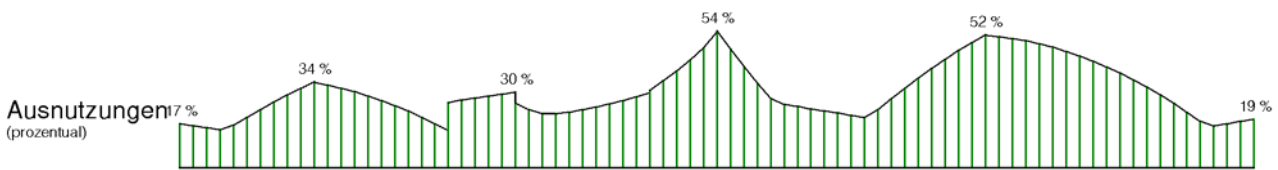
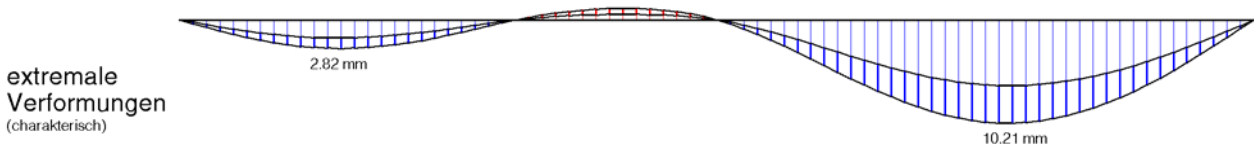
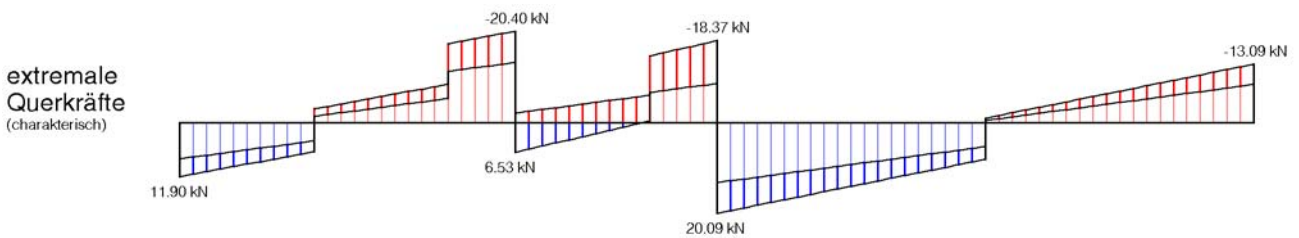
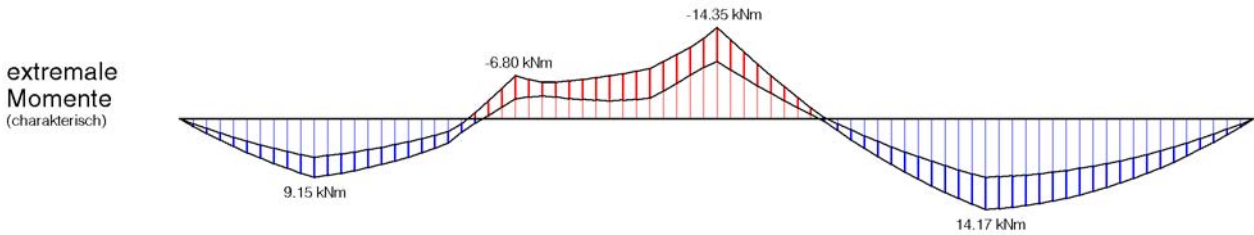
### 33: TRÄGER ACHSE C STAHL



Belastung: Streckenlast(feldweise konstant):  
 Feld 1:  $g/p = 4.00 / 1.50$  kN/m, Feld 2:  $g/p = 4.00 / 3.00$  kN/m, Feld 3:  $g/p = 4.00 / 2.00$  kN/m,

Einzellasten:  
 $F_1: G/P = 6.00 / 3.00$  kN,  $F_2: G/P = 6.00 / 3.00$  kN,  $F_3: G/P = 6.00 / 3.00$  kN,  
 $F_4: G/P = 6.00 / 3.00$  kN,

Material: Stahl: S235 (St37), Standardprofil: HE120B  
 plastischer Querschnittsnachweis nach EC3-1-1 6.2.1(6), Grenzwerte  $\text{grenz}(c/t)$  nach EC3-1-1 Tabelle 5.2



Lagerreaktionen (charakteristisch)

	A kN	B kN	C kN	D kN
minimal	7.98	11.28	22.04	8.58
ständig	8.18	15.33	23.82	8.68
maximal	11.90	26.93	38.46	13.09